

# What is Consent? ... cont..

Here are some examples of consent related to workplace harassment:

1. Verbal consent: – A coworker asks, "May I give you a hug?" and you respond with a clear "Yes" or "No".
2. Physical boundaries: – A colleague respects your personal space and doesn't touch you without permission.
3. Workplace relationships: – Two coworkers engage in a romantic relationship, but both parties explicitly agree to keep the relationship consensual and professional.
4. Communication: – A manager asks an employee if they're comfortable with a particular task or project, and the employee agrees or declines.
5. Boundary setting: – An employee tells a coworker, "I'm not comfortable discussing my personal life at work," and the coworker respects that boundary.
6. Ongoing consent: – A colleague asks to borrow a pen and you agree, but later tell them, "Please ask next time," and they respect your revised boundary.
7. Withdrawal of consent – An employee initially agrees to work overtime but later says, "I'm not comfortable working extra hours this week," and their manager respects their decision.

Ensure A Respectful & Safe Workplace. In such case,  
Zero Tolerance means anything

**Less than Zero**

**HR Vidyalaya - The POSH Specialist**

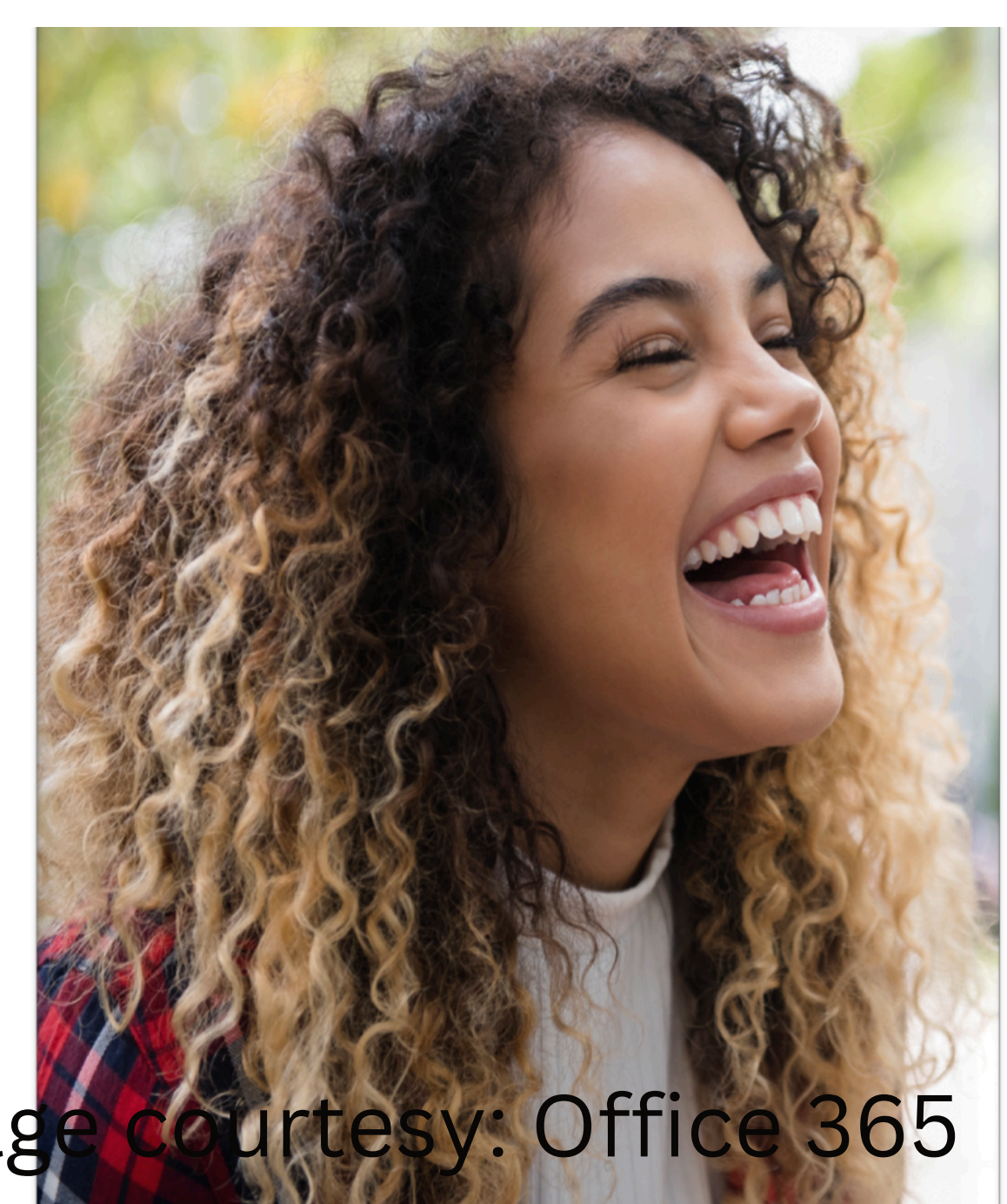


Image courtesy: Office 365